

# IMPLANT-SUPPORTED BRIDGE

An implant-supported bridge replaces one or more missing teeth by using implants for support.

## Frequently Asked Questions

### 1. How is an implant-supported bridge made?

- Implants are placed in the jawbone next to the site of the missing teeth.
- An impression or digital scan is made of the implants and is used to fabricate the bridge.
- The bridge consists of the missing teeth called pontics, and crowns which are attached to the implants.
- The bridge is cemented or screwed onto the implants.



Two implants

### 2. What materials are used to make an implant-supported bridge?

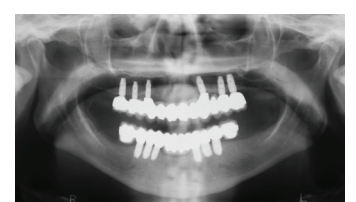
- The implants are made of titanium or zirconia.
- The bridge is made of a resin polymer, a tooth-colored ceramic, a similar ceramic fused to a metal foundation, or a metal alloy – usually gold and other precious metals.



Implant-supported bridge

### 3. What are the benefits of an implant-supported bridge?

- It replaces missing teeth without involving the natural teeth.
- It helps maintain the bite and prevents teeth from shifting.
- It may improve the smile and restore speech and the ability to chew.



Multiple implants

### 4. What are the risks of an implant-supported bridge?

- A problem with an implant may require its removal, necessitating replacement of both the implant and the bridge.
- Due to shifting of the natural teeth, a space may develop between the implant bridge and the adjacent teeth.
- Recession of the gums may occur, and as a result the join of the bridge to the implants may show.
- The screw or cement keeping the bridge on the implants may fail.
- Food may become trapped under the bridge causing a possible risk of the loss of the bone securing the implants.
- Should the natural teeth change color due to age or bleaching, the color of the bridge will no longer match.
- An excessive bite force may cause the bridge to chip break or wear.



All missing teeth replaced with implant-supported bridges

### 5. What are the alternatives to an implant-supported bridge?

- Replacement of the missing teeth with a tooth-supported bridge.
- Replacement of the missing teeth with a removeable partial denture.
- Leave the space as is.

### 6. How long will an implant-supported bridge last?

- Ceramic fused to metal bridges have a survival rate of approximately 94% after 5 years.
- Ceramic-only bridges have a slightly lower survival rate of approximately 88% after 5 years.
- An implant-supported bridge can last 10-20 years, depending on individual risk factors for the implants.
- Your dentist will provide guidance as to the choice of bridge material and implants.